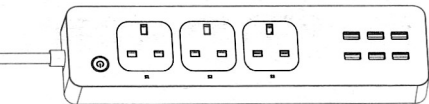


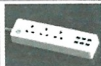
# User Manual

Smart Plug Instruction

HLT-336



# Product introduction

Picture	Mode	Technical data	Wifi & System
	HLT-336	Input:AC90V--240V Output:AC220V--240V Current:13A (Max) USB:5V-4.8A (Max)	Wi-Fi:2.4GHz System:IOS8.0above Android4.2above

## Smart socket APP install ment

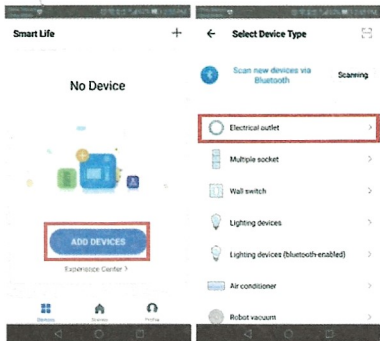
1. Download Smart Life APP in application store.
2. If there is no Smart Life APP, please scan QR below to download. Applicable to both Android & IOS.
3. Please register and activate based on country where you located.
4. Note: This smart wifi socket is only compatible with 2.4GWIFI, cannot compatible for 5G WIFI.



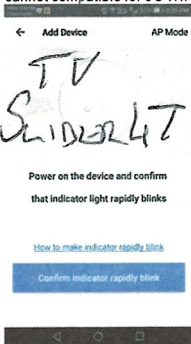
1. Power the smart socket to confirm that the LED blue lamp is flashing fast. If it is not flash, please press the button for 5 seconds to restore setting until the LED blue light is in a fast flicker state.

2. Open Smart life APP to register, after login, lick add device.

3. Device added, below interface appeared, choose device type as electrical outlet.



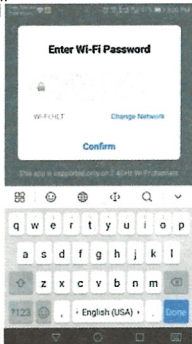
4. After choosing devices, click confirm indicator is flashing
5. Network: need user phone's wifi and smart socket's wifi are under the same network.
6. This smart wifi socket is only compatible with 2.4GWIFI, cannot compatible for 5G WIFI.



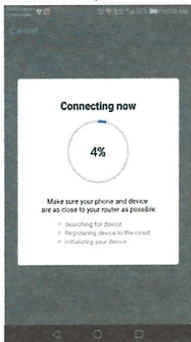
Power on the device and confirm that indicator light rapidly blinks

[How to make indicator rapidly blink](#)

Confirm indicator rapidly blink



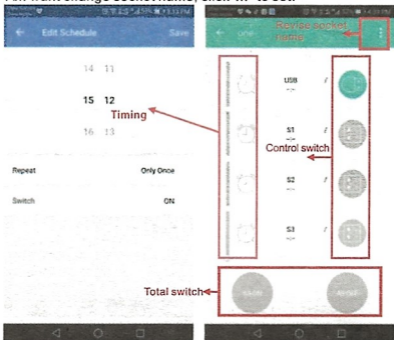
7. After choosing net, wifi socket will be connected. When processing bar shows 100%, it is successfully added.
8. If connected, blue indicator will turn out.



9. On my devices interface, choose connected wifi sockets. Click switch button to control switch. Red LED indicates power on, indicator turn out, means power off.

10. Select the countdown to set timing to open or close smart socket.

11. If want change socket name, click "..." to set.



12. On reset or redistribute network, press socket buttons for 3 to 5 seconds to restore settings. Blue wifi indicator light flashes quickly, smart socket can be connected with other WIFIs. Blue wifi indicator flashes slow, means out of network, need reset.

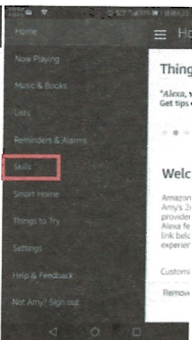
## Binding operation with Amazon Alexa

1. Click HOME button in Alexa APP interface, see below:

2. Drop-down menu appeared after click HOME button, then click skills button, see below:

3. After clicking Skills button, see below picture, search Smart Life APP.

4. After searched Smart Life APP, below interface appeared, those APP in the red square frame.

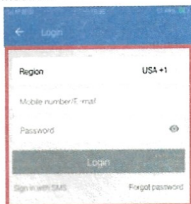


### Smart life



5. Click chosen Smart Life APP, following interface appeared for authorization and activation.

6. After authorization and activation, enter your account and code, then click link now for connection.



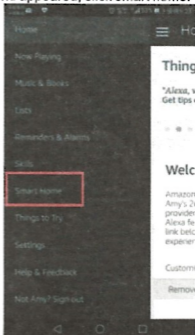
Enter account and code,  
click link now

7. After click link now, click authorize for authorization  
8. Binding finished when below interface appeared.



9. After binding Smart life with Amazon Alexa, return to HOME interface.

10. Click home button, below menu appeared, click smart home.



11. After click Smart home, below interface appeared, click Devices button.

12. After click Devices button, below interface appeared, click Devices button.



13. Click the "Devices" button again and app will tell you, wait about 20 seconds for device to search. Upon completion of search, all bounded products name appeared.

14. After searching, you can quit Smart Life APP and Amazon Alexa APP, you can control by voice then.

15. Alexa wakeup word set by Amazon regulation, you can revise also.

**Factory wakeup setting now: Alexa**

**Like: if your wifi socket is named of One when connected, you can speaker to Alexa:**

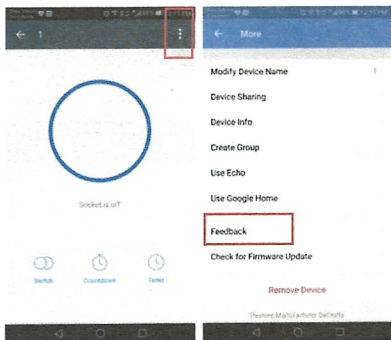
**Alexa, turn on one, to power on,**

**Alexa, turn off one, to power off.**

## Advice/Feedback

If you need any help when using our product, please send us your questions. We will reply and resolve your questions within 24hrs, thank you!

Click below mark, choose feedback to give us advice.



**Customer Support Service:** If you have any question, please send email to us: [lanxun1eu@hotmail.com](mailto:lanxun1eu@hotmail.com)

We will reply and resolve your questions within 24hrs, thank you!

**Video Guide Links**(how to connect Alexa and your phone):

<https://www.youtube.com/watch?v=RZJkstLqihg>

**Facebook :** <https://www.facebook.com/xia.mao.1276>